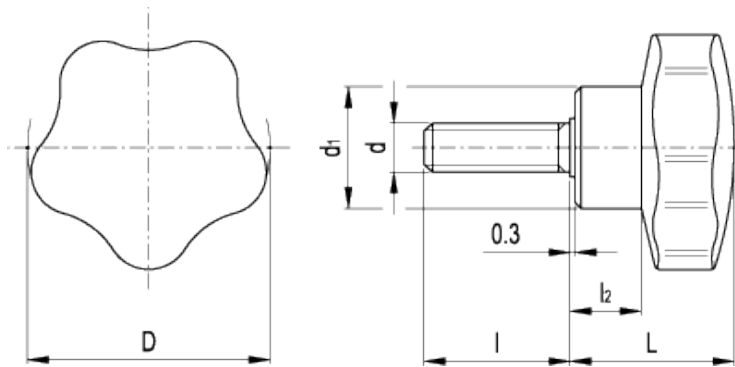


VC.192 p

Lobe knobs



ELESA Original design



technical informations

Material

Phenolic based (PF) Duroplast. Resistant to solvents, oils, greases and other chemical agents.

Colour

Black, glossy finish.

Assembly

Zinc-plated steel threaded stud, chamfered flat end according to UNI 947 : ISO 4753 (see [Technical Data](#)).

Features

The exclusive five-lobe shape (ELESA original design) offers the operator's finger a proper grip and prevents unhealthy residues from depositing thanks to its solid shape without cavities.

Standard Elements		Main dimensions				Threaded stud		Weight
Code	Description	D	L	d ₁	l ₂	d _{6g}	l	g
66121	VC.192/25 p-M5x10	25	21	15	9	M5	10	11

66122	VC.192/25 p-M5x16	25	21	15	9	M5	16	12
66131	VC.192/25 p-M6x10	25	21	15	9	M6	10	10
66132	VC.192/25 p-M6x16	25	21	15	9	M6	16	12
66133	VC.192/25 p-M6x20	25	21	15	9	M6	20	14
66134	VC.192/25 p-M6x30	25	21	15	9	M6	30	18
66231	VC.192/30 p-M6x10	32	23	19	11	M6	10	17
66232	VC.192/30 p-M6x16	32	23	19	11	M6	16	18
66233	VC.192/30 p-M6x20	32	23	19	11	M6	20	20
66234	VC.192/30 p-M6x35	32	23	19	11	M6	35	25
66241	VC.192/30 p-M8x20	32	23	19	11	M8	20	24
66242	VC.192/30 p-M8x30	32	23	19	11	M8	30	27
66243	VC.192/30 p-M8x40	32	23	19	11	M8	40	29
66351	VC.192/40 p-M6x10	40	27	21	12	M6	10	28
66352	VC.192/40 p-M6x20	40	27	21	12	M6	20	30
66353	VC.192/40 p-M6x30	40	27	21	12	M6	30	32
66361	VC.192/40 p-M8x16	40	27	21	12	M8	16	35
66362	VC.192/40 p-M8x25	40	27	21	12	M8	25	38
66363	VC.192/40 p-M8x35	40	27	21	12	M8	35	40
66364	VC.192/40 p-M8x45	40	27	21	12	M8	45	43
66481	VC.192/50 p-M8x16	50	33	25	14	M8	16	52
66482	VC.192/50 p-M8x20	50	33	25	14	M8	20	53
66483	VC.192/50 p-M8x25	50	33	25	14	M8	25	55
66484	VC.192/50 p-M8x30	50	33	25	14	M8	30	56
66485	VC.192/50 p-M8x40	50	33	25	14	M8	40	60
66491	VC.192/50 p-M10x20	50	33	25	14	M10	20	63
66492	VC.192/50 p-M10x30	50	33	25	14	M10	30	66
66493	VC.192/50 p-M10x40	50	33	25	14	M10	40	70
66494	VC.192/50 p-M10x50	50	33	25	14	M10	50	73
66561	VC.192/60 p-M10x20	60	37	27	17	M10	20	87
66562	VC.192/60 p-M10x30	60	37	27	17	M10	30	92
66563	VC.192/60 p-M10x40	60	37	27	17	M10	40	98
66564	VC.192/60 p-M10x50	60	37	27	17	M10	50	101
66571	VC.192/60 p-M12x25	60	37	27	17	M12	25	105
66572	VC.192/60 p-M12x30	60	37	27	17	M12	30	110
66573	VC.192/60 p-M12x40	60	37	27	17	M12	40	118
66574	VC.192/60 p-M12x50	60	37	27	17	M12	50	128
66651	VC.192/70 p-M12x30	70	44	30	20	M12	30	140
66652	VC.192/70 p-M12x50	70	44	30	20	M12	50	160
66653	VC.192/70 p-M12x60	70	44	30	20	M12	60	165
66654	VC.192/70 p-M12x70	70	44	30	20	M12	70	175
66661	VC.192/70 p-M14x50	70	44	30	20	M14	50	180
66662	VC.192/70 p-M14x70	70	44	30	20	M14	70	200
66731	VC.192/85 p-M16x50	85	55	35	30	M16	50	290



ELESA and GANTER models all rights reserved in accordance with the law. Always mention the source when reproducing our drawings.

STANDARD MACHINE ELEMENTS WORLDWIDE